

# Project 1: Rooms & Corridors

## Design

Our team of designers transforms each idea into a pattern that matches the customer's needs.



ARS 062



ARS 002



ARS 552

## Samples

Starting with a selection of ARS – RAL – PANTONE colours, or using a material that has been supplied to us, our laboratory creates 1m x 1m samples with the selected colours to faithfully recreate the final result.



## Laying Plan

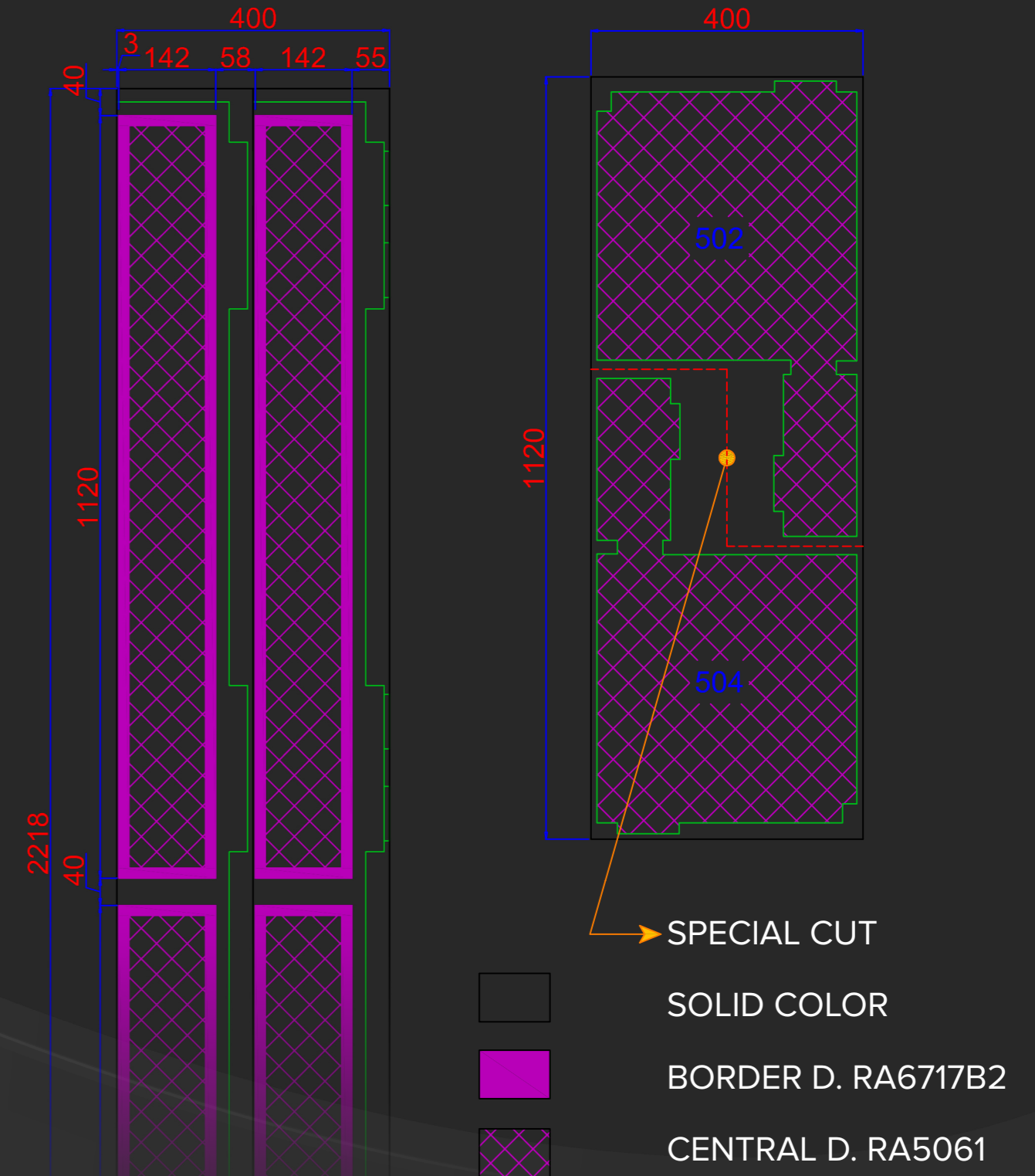
FLOOR	AREA	MTL	H	M <sup>2</sup>	DESIGN	NOTES
5	ROOMS 502 + 504	11,20	4,00	44,80	RA5061C1	special cut
5	ROOMS 503 + 505	11,20	4,00	44,80	RA5061C1	special cut
5	ROOMS 506	28,50	4,00	114,00	RA5061C2	-
5	ROOMS 507 + 509	11,20	4,00	44,80	RA5061C3	-
5	COMPLETE ROOM 508	28,50	4,00	114,00	RA5061C3	-
4 / 5	CORRIDORS	22,20	4,00	88,80	RA6651C1	88,80

TOTAL TO PRODUCE: 451,20 M<sup>2</sup>

Upon request, our surveyor can devise bespoke solutions to reduce or eliminate material waste.

CORRIDORS 4th / 5th FLOOR  
#1 ROLL OF 22,20 lm x 4 m

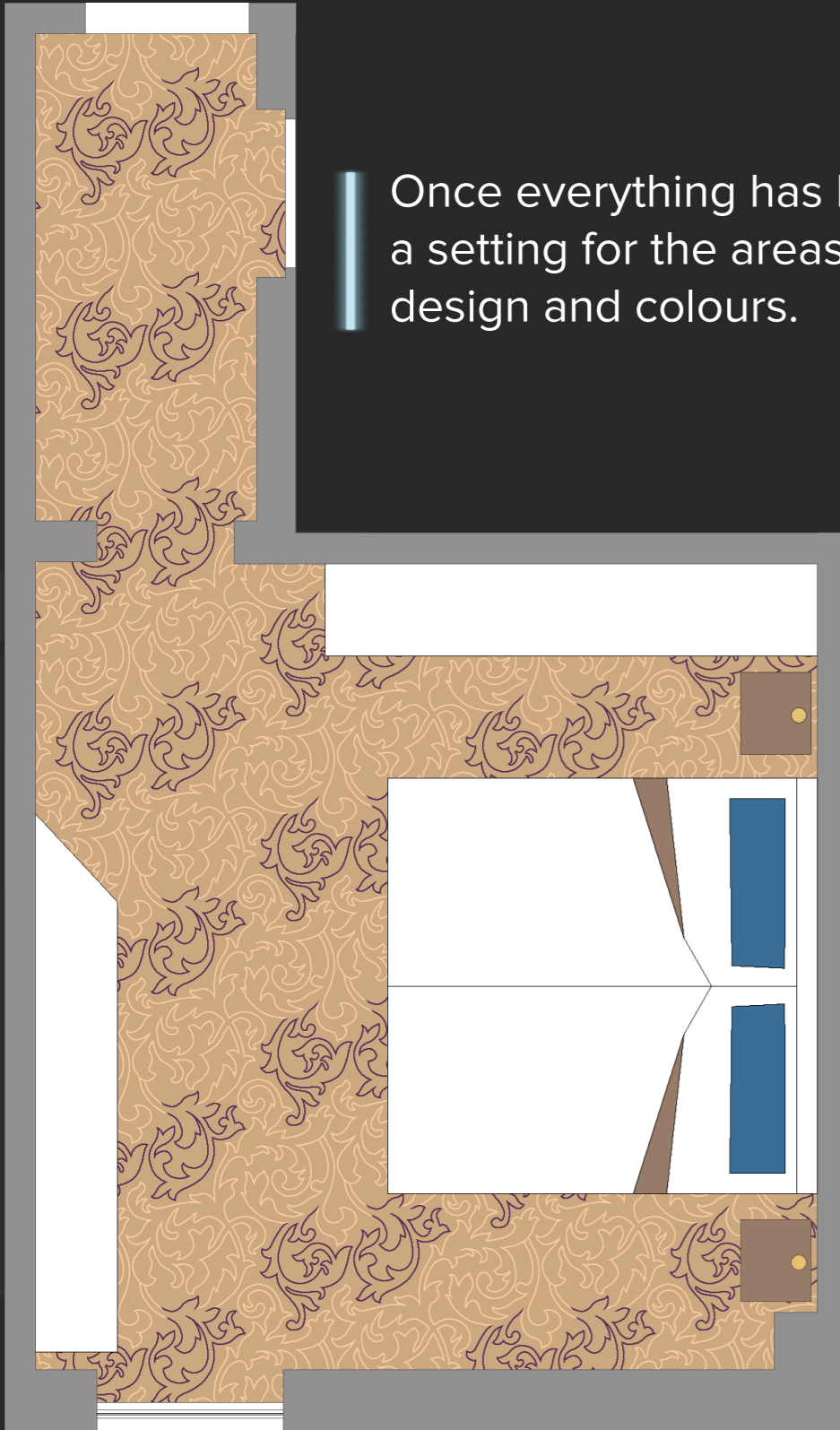
ROOMS 502 / 504  
#ROLL OF 11,20 lm x 4 m





## Layout

Once everything has been defined, we can create a setting for the areas for a final evaluation of the design and colours.

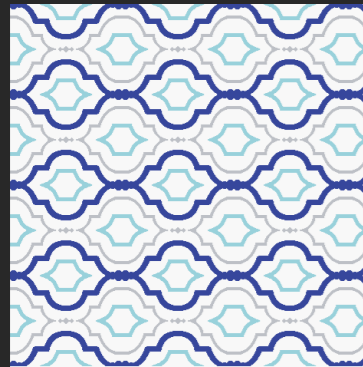


## Final Result





# Project 2: Yacht Design & Samples



PATTERN 1

100% NEW ZEALAND WOOL

0,37 x 0,3 m

- ARS 001 // 10 mm CUT PILE
- ARS 001 // 6 mm CUT PILE
- ARS 489 // 6 mm CUT PILE
- ARS 176 // 6 mm CUT PILE



PATTERN 5

100% NEW ZEALAND WOOL

0,28 x 0,3 m

- ARS 001 // 10 mm CUT PILE
- ARS 076 // 6 mm CUT PILE
- ARS 176 // 6 mm CUT PILE
- ARS 282 // 6 mm CUT PILE

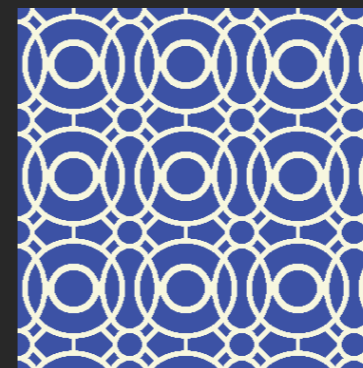


PATTERN 2

100% NEW ZEALAND WOOL

0,3 x 0,3 m

- ARS 001 // 6 mm CUT PILE
- ARS 328 // 10 mm CUT PILE
- ARS 393 // 10 mm CUT PILE

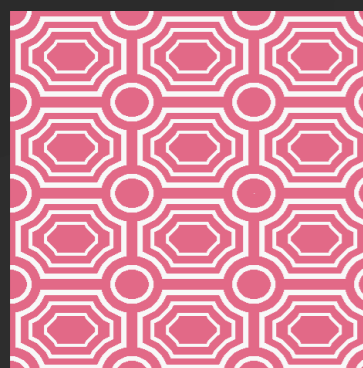


PATTERN 6

100% NEW ZEALAND WOOL

0,3 x 0,3 m

- ARS 001 // 10 mm CUT PILE
- ARS 328 // 10 mm CUT PILE

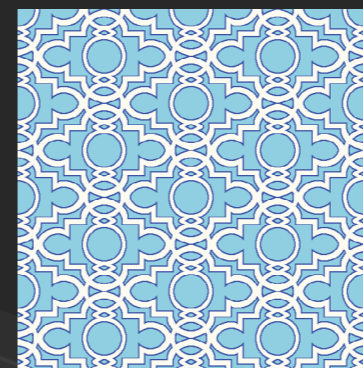


PATTERN 3

100% NEW ZEALAND WOOL

0,4 x 0,3 m

- ARS 001 // 6 mm CUT PILE
- ARS 055 // 10 mm CUT PILE

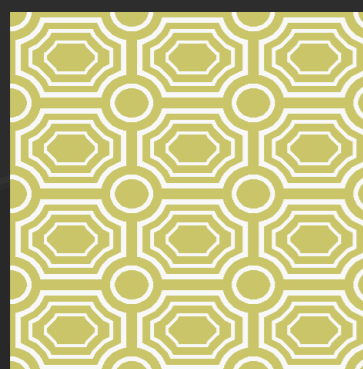


PATTERN 7

100% NEW ZEALAND WOOL

0,7 x 0,4 m

- ARS 001 // 6 mm CUT PILE
- ARS 489 // 10 mm CUT PILE
- ARS 176 // 6 mm CUT PILE

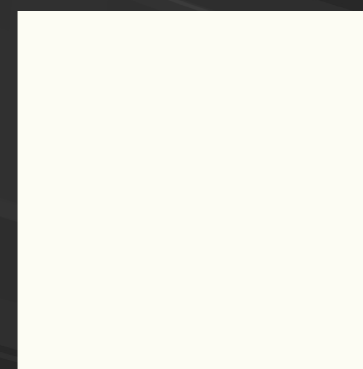


PATTERN 4

100% NEW ZEALAND WOOL

0,4 x 0,3 m

- ARS 001 // 6 mm CUT PILE
- ARS 393 // 10 mm CUT PILE



PATTERN 0

100% NEW ZEALAND WOOL

PLAIN CARPET

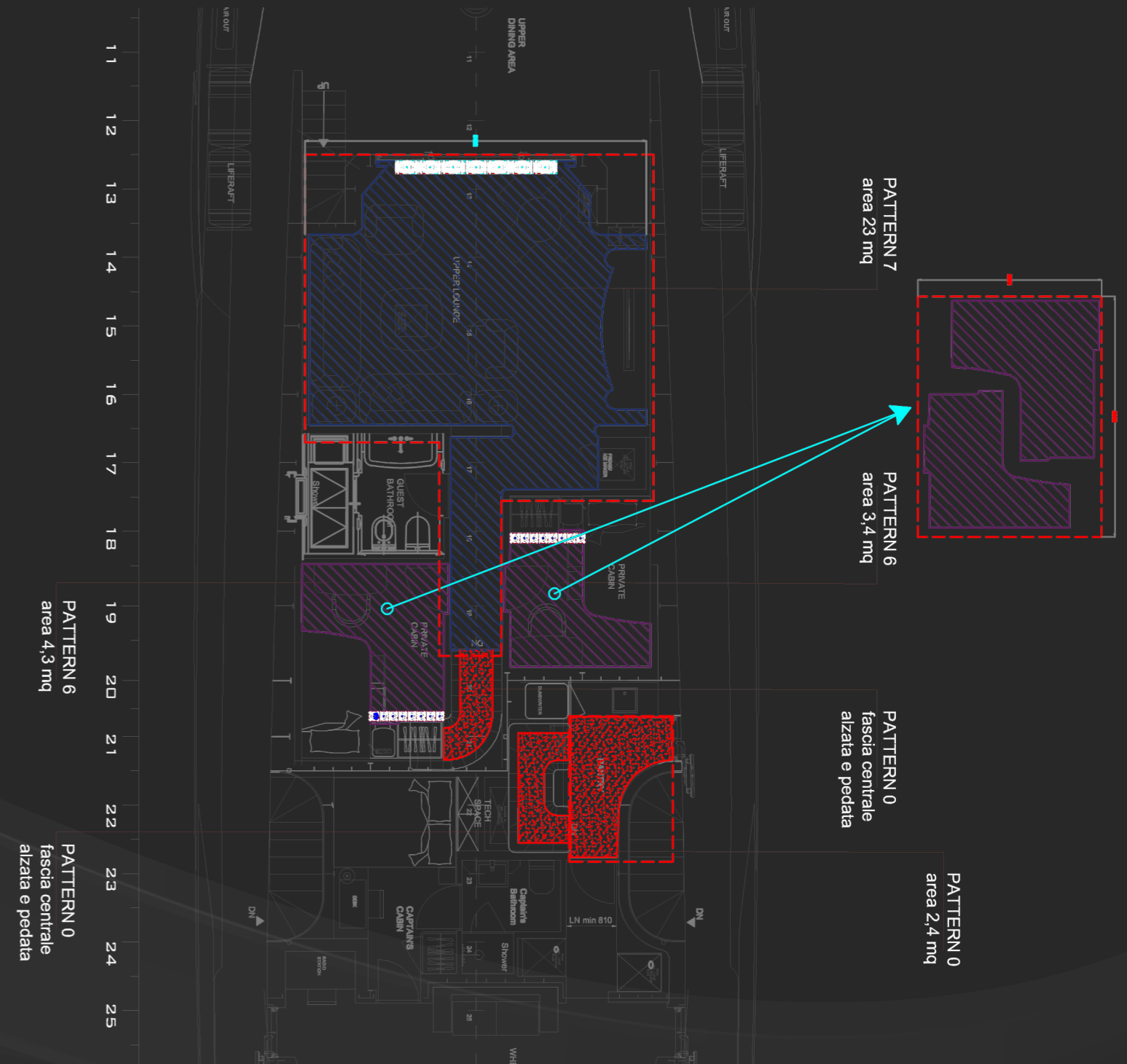
- ARS 001 // 10 mm CUT PILE



# Laying Plan

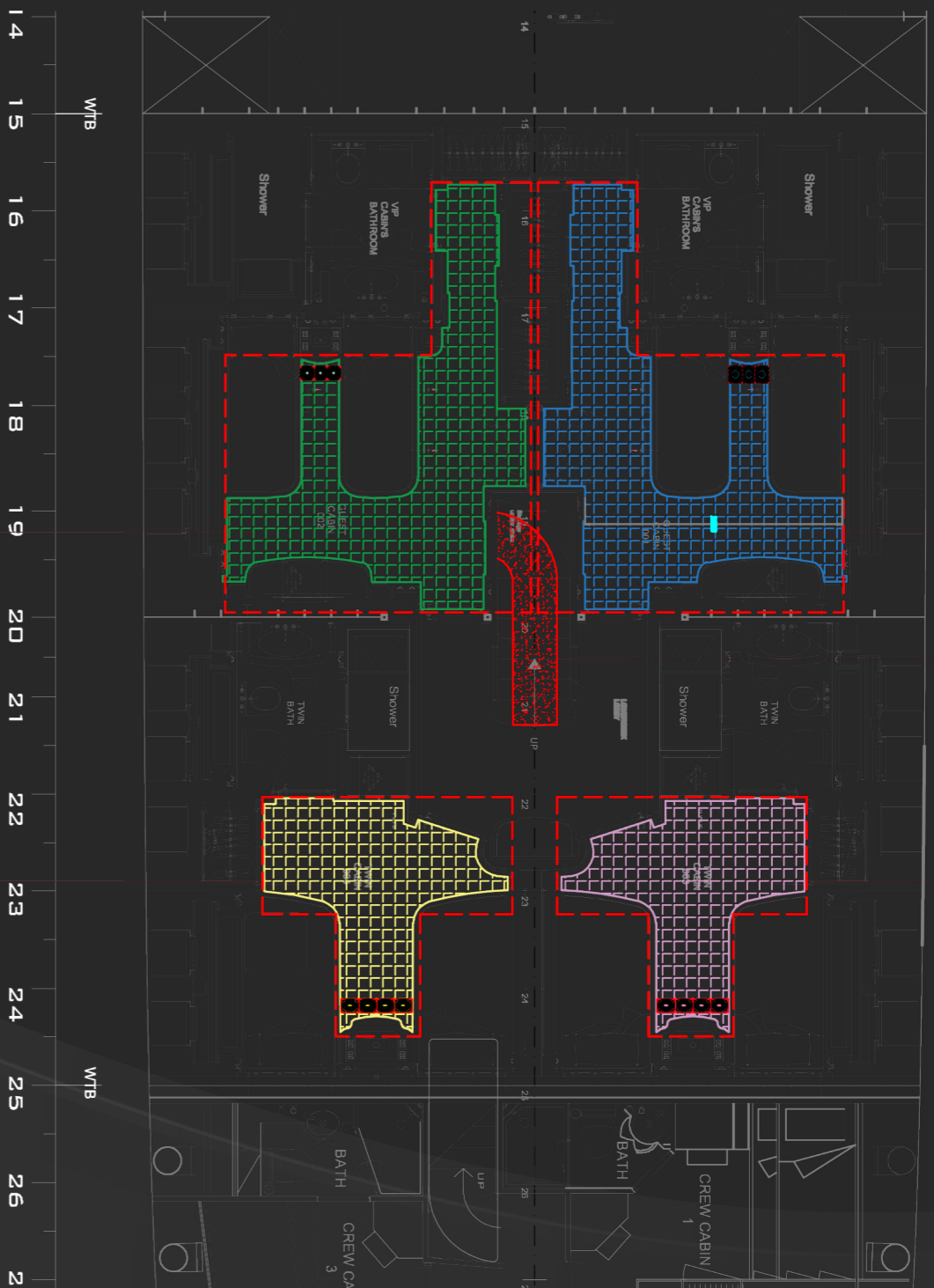
DESIGN	DECK	AREA	MTL	H	MQ	
●	PATTERN 00	UPPER	PANTRY	2,35	1,70	4,00
		UPPER	STAIRS	3,60	3,00	10,80
		MAIN	PANTRY	5,00	2,80	7,40
		LOWER	STAIRS	4,70	1,60	7,52
● ●	PATTERN 01	LOWER	GUEST CABIN	5,00	3,50	12,28
	PATTERN 02	LOWER	GUEST CABIN	5,00	3,50	12,28
●	PATTERN 03	LOWER	TWIN CABIN	2,80	2,80	5,15
●	PATTERN 04	LOWER	TWIN CABIN	2,80	2,80	5,15
● ●	PATTERN 05	MAIN	SALON	10,30	5,00	51,50
		MAIN	CORRIDOR	6,20	2,30	10,30
		MAIN	CABIN	4,20	7,00	29,40
●	PATTERN 06	UPPER	PRIVATE CABIN	3,90	3,00	11,70
●	PATTERN 07	UPPER	LOUNGE	8,05	5,60	31,60
<b>TOTAL TO PRODUCE: 199 M<sup>2</sup></b>						

# Upper Layout





# Lower Layout

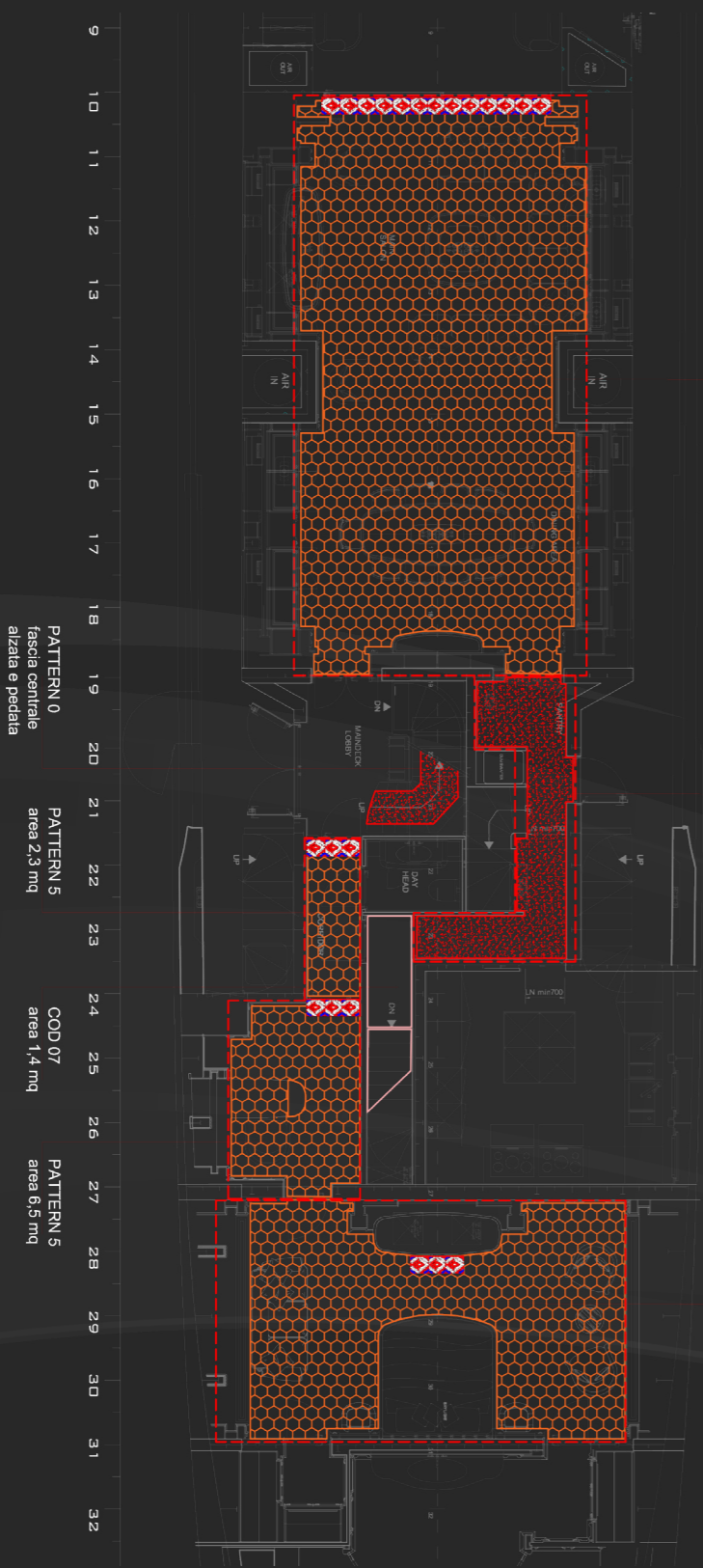


PATTERN 1  
area 6,2 mq

PATTERN 0  
fascia centrale  
alzata e pedata

PATTERN 3  
area 3,6 mq

# Main Layout



PATTERN 5  
area 43 mq

PATTERN 0  
area 6 mq

PATTERN 5  
area 19 mq

PATTERN 0  
fascia centrale  
alzata e pedata

PATTERN 5  
area 2,3 mq

COD 07  
area 1,4 mq

PATTERN 5  
area 6,5 mq

PATTERN 2  
area 6,2 mq

PATTERN 4  
area 3,6 mq



# Final Result

**LOWER TWIN CABIN**

PATTERN 04



**LOWER GUEST CABIN**

PATTERN 01



**MAIN STAIRS**

PATTERN 00



**MAIN SALON**

PATTERN 05



**MAIN CORRIDOR**

PATTERN 05



**MAIN CABIN**

PATTERN 05



**LOWER TWIN CABINS**

PATTERN 03/04



**UPPER LOUNGE**

PATTERN 07

