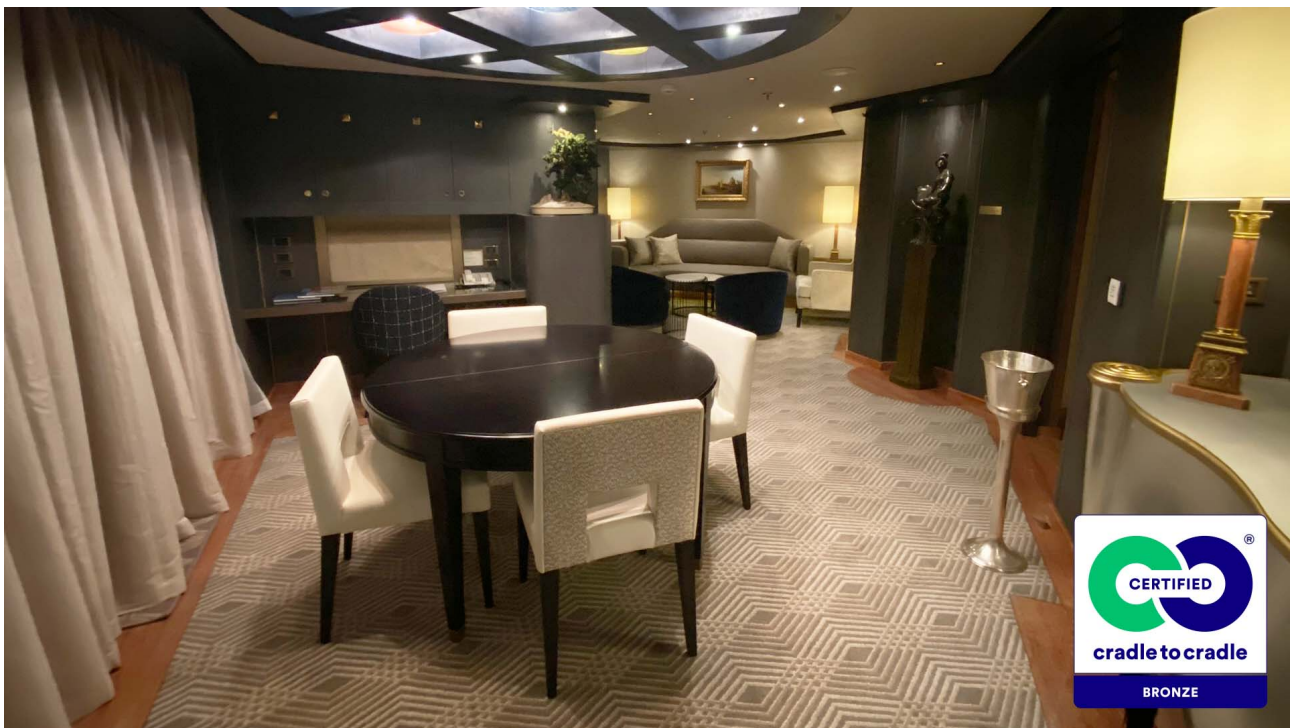


# RESPONSIBLE CABIN DESIGN

The conference program at the Cruise Ship Interiors Expo in London includes the essential topic "Responsible Cabin Design".

Designing cabins with environmental, economic, and social impacts in mind is particularly important as any sustainable accomplishment can have a much bigger impact when multiplied by the number of cabins which are delivered.

Responsible cabin design is about everything between energy optimisations to the selection of interiors - and all in between.



Responsible cabin design is not just about CO2 optimisations, but about healthy materials produced in a responsible way, and which contribute to a healthy indoor climate. All this without compromising on the strict requirements for materials on board a ship and not least the aesthetic expression that must support the good design and guest experience.

The requirement for an IMO certification is fundamental for cruise ship interiors, but it limits the possible choice of materials. As Petra Ryberg, Head of design at P&O Australia, puts it in an interview with Dansk Wilton:

*"It feels like you are left with what is IMO certified, but we need to understand what the better option is in terms of sustainability."*

Read the article based on the interview with Petra Ryberg

[Read now](#)

A portrait of Petra Ryberg, a woman with blonde hair, wearing a white shirt, standing with her arms crossed in front of a glass wall.

However, knowing what the better alternative is in terms of sustainability can be challenging. Lack of knowledge and documentation makes it difficult, and this is where a certification can be supportive. At the same time, it is important to take a broad perspective, so that the focus is not only on CO<sub>2</sub>, for example, but on all essential aspects of sustainability.

Petra Ryberg points out that this is one of the strengths of the Cradle to Cradle certification system; it embraces many aspects of sustainability and the whole lifecycle of the product.

Speaking of the lifecycle of products, the aim should be to introduce a circular economy, where waste does not exist at best. We all face a huge challenge – designers, suppliers, shipowners, shipyards, and all other stakeholders in the industry. We need to develop innovative and technological solutions to recover our “waste resources” and these solutions need to be translated into systems that can be implemented, for instance during drydocks.

As part of their Cradle to Cradle certification, Dansk Wilton is working on initiatives to form the path for recycling carpet waste:

*"It is essential that we have recycling and introducing a circular economy as top priority. It is a long and complex process and sometimes we feel like modern-day explorers – on a quest into uncharted land. We know where we would like the journey to end but not necessarily the way to get there", Søren Sonne, CEO at Dansk Wilton.*

Join the conference session  
"Responsible Cabin Design" to get  
some insights from the industry and  
the Cradle to Cradle products  
innovation institute

[Learn more](#)

A portrait of Søren Sonne, a man with short grey hair, wearing a dark suit jacket over a light shirt, standing with his arms crossed.