



AP FIRE DOORS

SLIDING DOOR SYSTEM
for multiple marine solutions



BRAND NEW



AP ADVANCED PNEUMATIC
Marine GmbH



FIRE DOORS

Sliding fire doors are designed to close openings in fire-resistant bulkheads by ensuring the same resistance as the structure.

(SOLAS chap- II-2 REG 3 and the FTP code)

GENERAL

Sliding fire doors are designed to prevent the passage of fire and smoke in the event of an emergency.

Sliding doors are the preferred solution in large accommodation areas where aesthetic, architectural design has to meet practical safety requirements.

The drives are designed and tested to operate at an ambient temperature of $200^{\circ}\text{C} \pm 50^{\circ}\text{C}$ in accordance with SOLAS chap. II 2 REG 30 and the FTP code.

AP-Marine offers the finest choice of different approved sliding fire door designs in combination with various state-of-the-art door drive systems.





single leave

SAFETY

REDEFINING SAFETY

AP-Marine GmbH is proud to present the latest development in marine fire protection technology.

High-tech insulation products meet state-of-the-art electronic control components for all marine sliding door applications.

The very extensive testing program has yielded an unrivalled product:

ECS 2100 / SFF

- Core material Page 4
- Panel design Page 5
- Adjustment Page 6
- Specials Page 7 - 9
- Lockset Page 10
- Drive train Page 11
- Heart – ECS 2100 Page 12
- Plug-and-play Page 13
- Electrics Page 14
- AP-Marine Page 15





LIGHTWEIGHT RELIABILITY

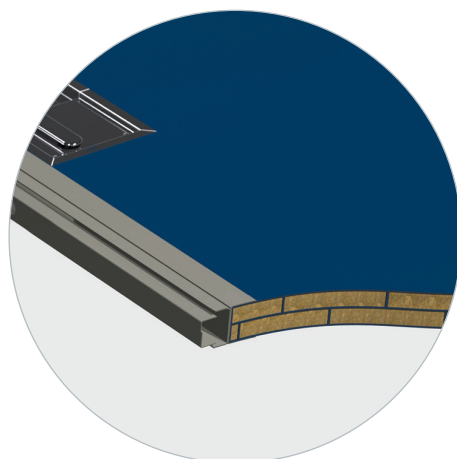
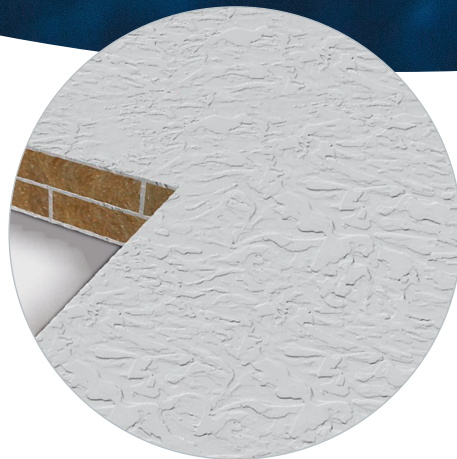
The core material of the door panel is the well-known **Caretta** material composed of rockwool and steel.

This application guarantees the lightest door panel in the market:

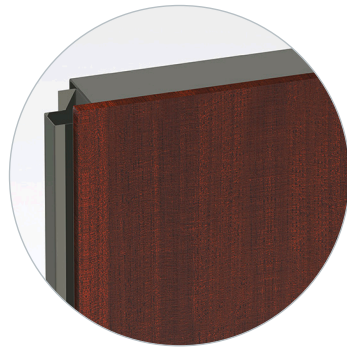
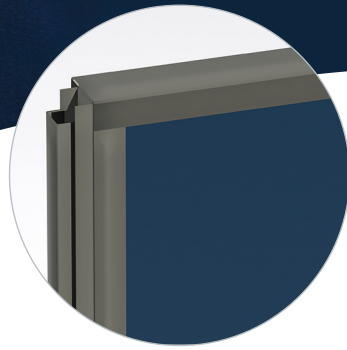
27 kg per square meter.

The surface of the door panel can come either in rough or smooth Caretta, with the surface primed or painted, veneer-clad or covered with mild or stainless steel up to 2mm thick.

(Various paint systems are available.)



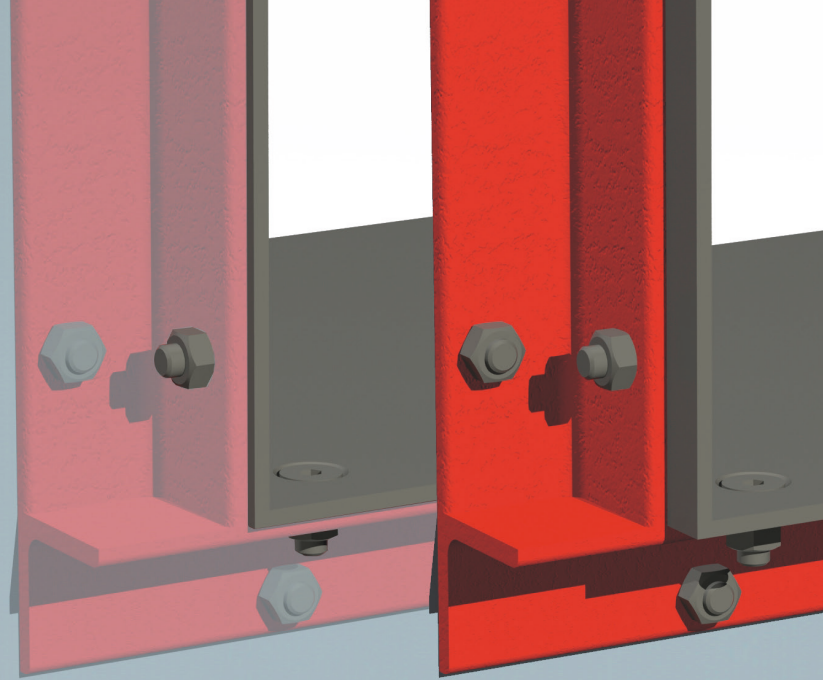
COMPLEX



FIRE PROTECTION WITH CHARACTER

On request, we can supply many different designs and surfaces.

Material applied to the door panels must have approval for **LOW SPREAD FLAMMABILITY**

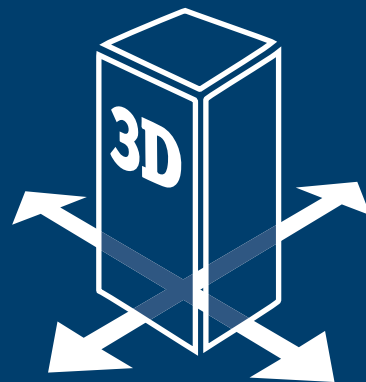


AS INDIVIDUAL AS THE VESSEL

Very special care has been taken with the form and finish of the door panel and frame.

The mild or stainless steel frame can be either welded or bolted with a 3-dimensional counter frame for easy adjustment of the configuration after installation and settling of the vessel's structure.

The door is tested and approved for installation in aluminium or steel bulkheads with A0 to A60 class approval.



Adjustable frame

ADJUSTMENT

The sill can be configured in various shapes. We are proud to have passed the A60 test with a gap of **25 mm** under the door and a 100 percent flush sill.

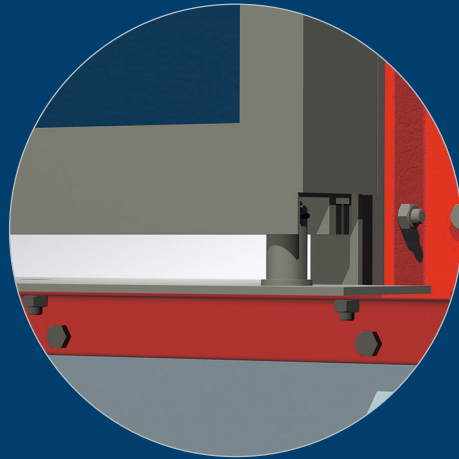


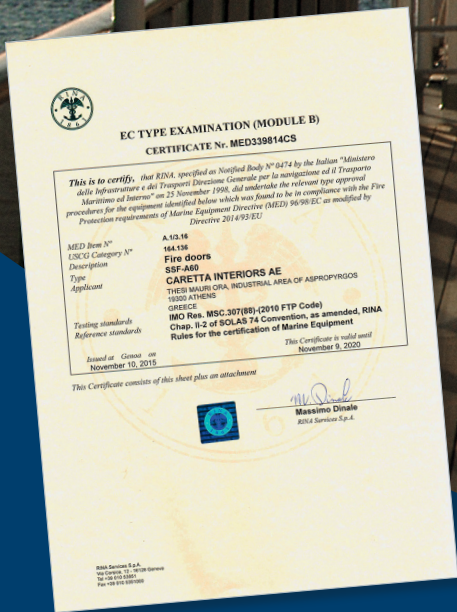
Continuous floor covering

A guidance system is integrated in the floor, ensuring **extra-smooth** movement.



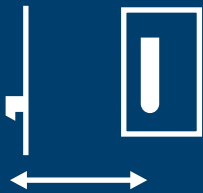
Extra-quiet





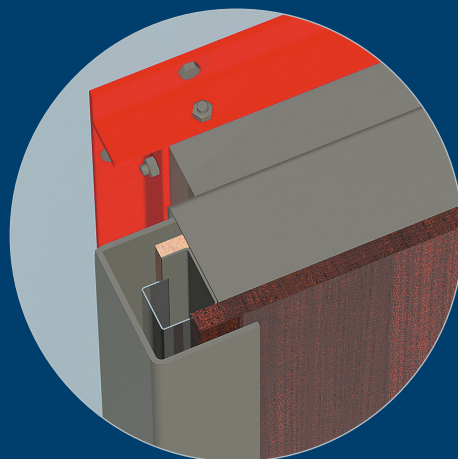
COMFORT

The recessed and illuminated door handle allows a backset of up to **400 mm** for decorative applications for the mega yacht industry.



More clearance for design

The smoke edge of the front jamb is designed in such a way that it can accommodate up to **25 mm** cladding of approved material on **BOTH sides** of the door panel. This allows an attractive design for A60 used as normally closed doors.

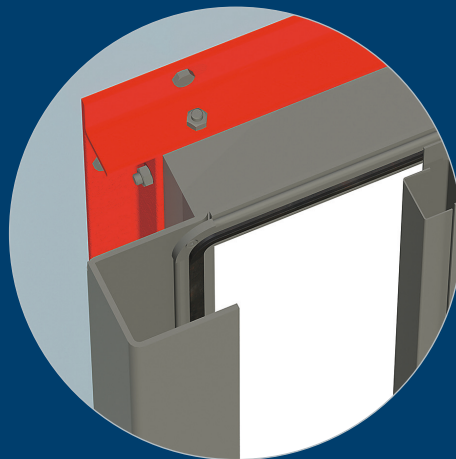


More space for design

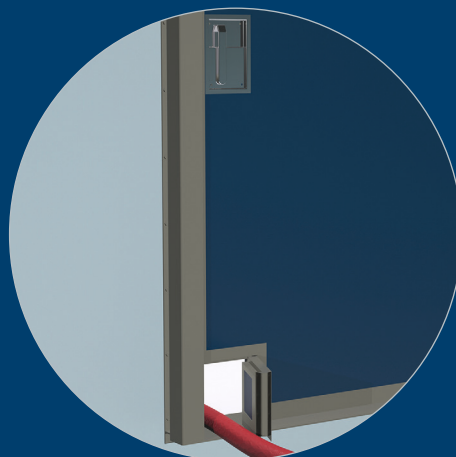


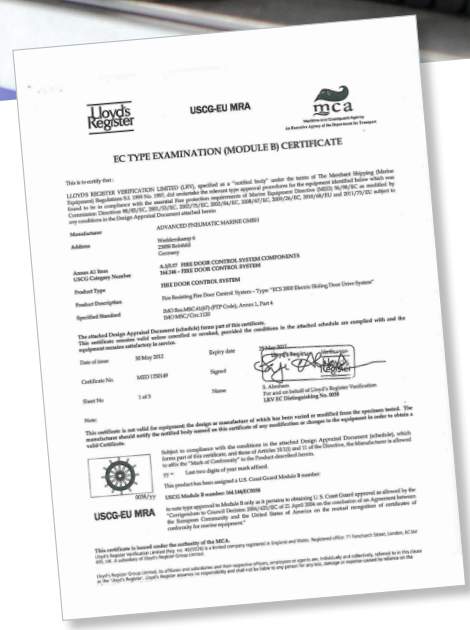
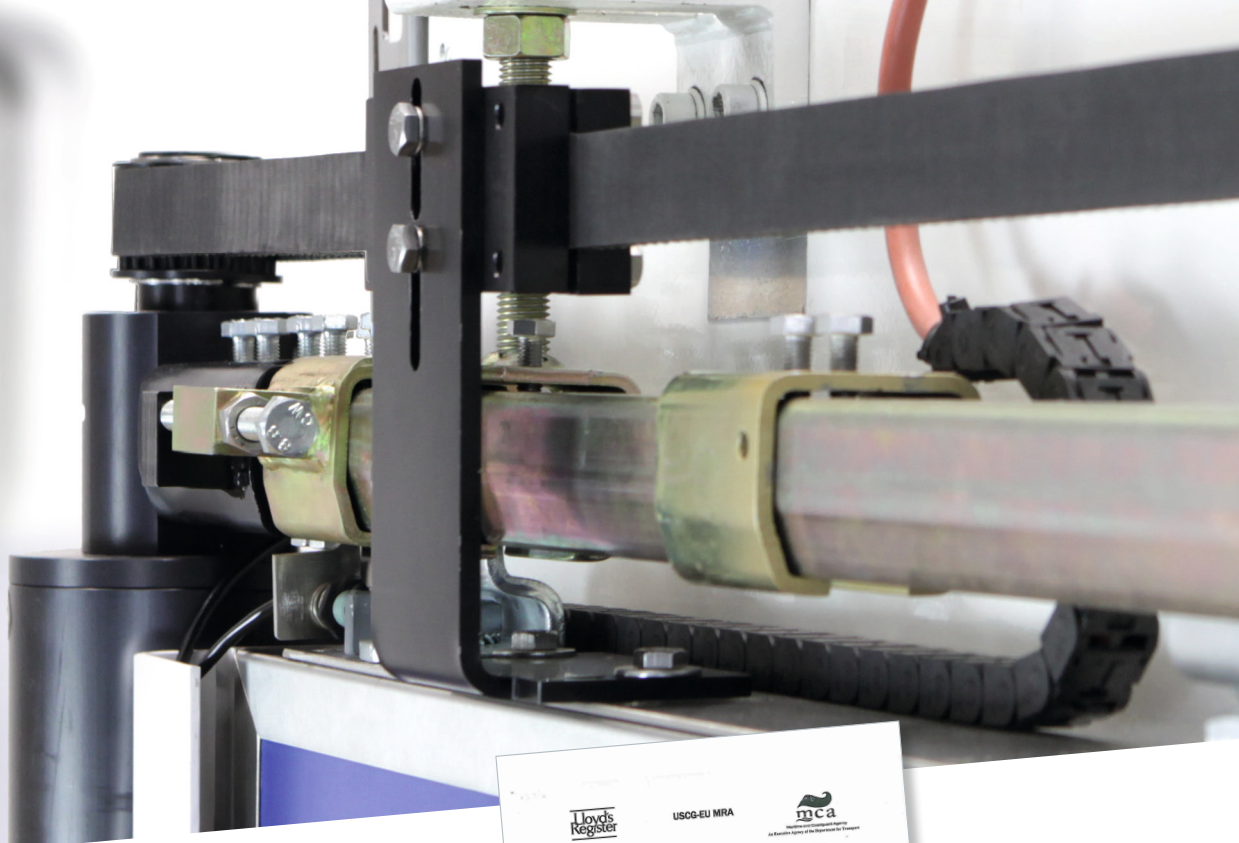
The doors can be used for internal or weather-tight applications. A very rigid seal configuration allows hose testing in accordance with the NMA regulations.

MAX C/H 2500mm
MAX C/O 4500mm

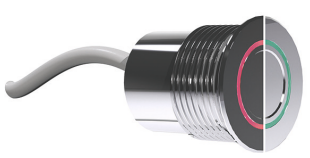


Hose ports are configured with an integral spring closer and come with a piano hinge for a **very aesthetic appearance**.





Classic push-button

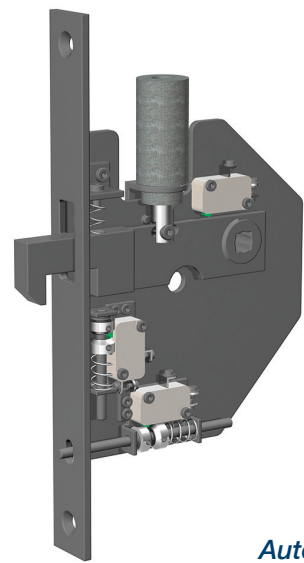


Piezoelectric push-button

The lockset can be equipped with illuminated recessed handles of various designs and is provided with a fully automated safety device.

The door can be opened OR closed via the actuation handle.

When a push-button is installed in addition, the hook latch is lifted automatically.



Automatic closer-timer

MOVABLE

FLEXIBLE SOLUTIONS

The drive train is equipped with an insulated DC motor, fire-resistant roller trolleys and a belt.

This belt is a unique technical component and allows whisper-quiet operation while also being almost maintenance-free.

The drive train can be supplied in various forms tailored to the installation situation on board.

Super-low solutions are available.

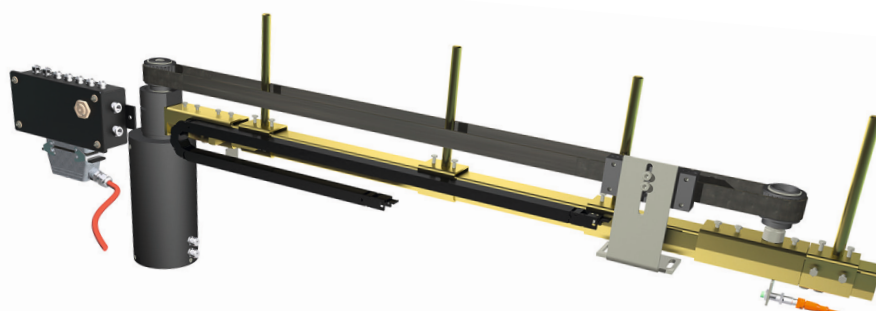
Force and speed are adjustable and correspond to the size and weight of the powered door.

Extra quiet roller trolleys allow decorative doors to be used daily.

250 mm



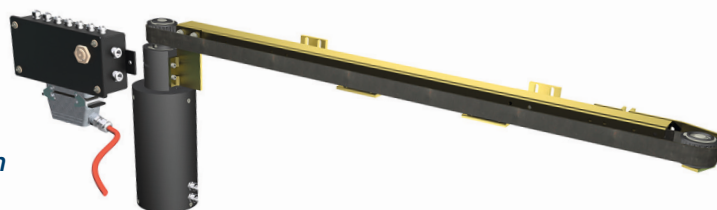
AP classic drive train



90 mm



AP super-low drive train





HEART

POWERFUL
AND INTELLIGENT

The heart of the all-new drive system in the unique ECS 2100 controller.

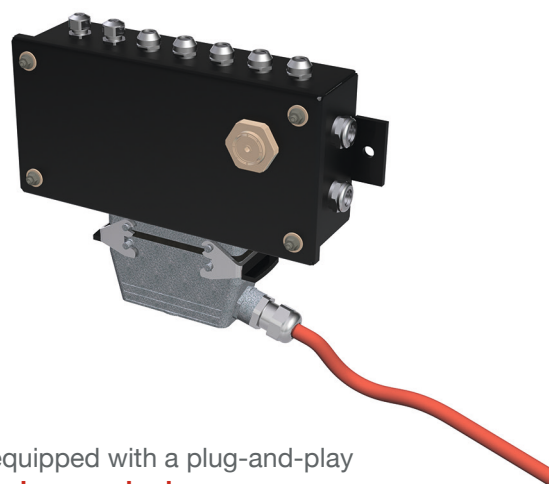
The CPU is designed to take account of an almost **inexhaustible power**, multiple control devices, user-friendly programming and best possible fire integrity.





The insulated box has various installation options and comes with quick-action lift-off hinges.

The box takes the ship's main supply (110 - 230 V / 50-60 Hz) and routes just **one cable only** to the junction box located at the drive train.



The junction box is equipped with a plug-and-play connector for **easy plug-and-play** installation and comes with a pre-installed audio alarm and temperature sensors.





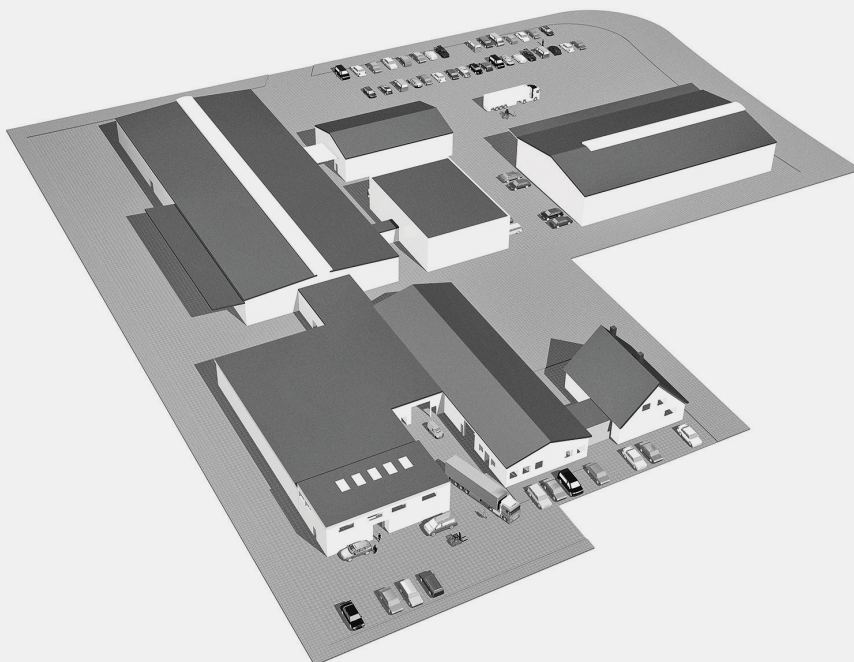
THE NAME FOR EXPERTISE

Advanced Pneumatic Marine GmbH is the world's leading manufacturer of drive systems and complete solutions for marine and offshore doors.

We supply sliding fire doors for mega yachts and production boats, cruise liners and ferries, FPSOs and fixed and mobile oil platforms, aircraft carriers and other naval units.

AP-Marine is based in the North German town of Reinfeld, which is located between the Hansa cities of Lübeck and Hamburg.

From there, we ship to our customers worldwide, from Spitsbergen to Sydney, from Dubai to Tokyo – and have been doing so in some cases for decades.





AP-Marine GmbH
Weddernkamp 6
D-23858 Reinfeld

Phone +49 4533 208035-0
Fax +49 4533 208035-11
E-mail info@ap-marine.com

www.ap-marine.com